

# PAFR

POPULAR ANNUAL FINANCIAL REPORT



For the year ending June 30, 2017

**LOUDONVILLE-  
PERRYVILLE**  
EXEMPTED VILLAGE SCHOOL DISTRICT



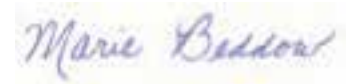
# TO THE CITIZENS OF THE LOUDONVILLE-PERRYSVILLE EXEMPTED VILLAGE SCHOOL DISTRICT,

We are pleased to present the Loudonville-Perrysville Exempted Village School District's (the "District") Popular Annual Financial Report (PAFR) for the year ending June 30, 2017. This report offers a reader-friendly overview of the District's general operating activities and key financial data and trends.

The PAFR is prepared on the cash-basis of accounting, which differs from financial information prepared in accordance with generally accepted accounting principles (GAAP). The information presented is unaudited and has been compiled by the District for purposes of this informational report. Annually, the District prepares financial statements in accordance with GAAP which are subject to an annual audit and available at [www.auditor.state.oh.us](http://www.auditor.state.oh.us).

Please contact me at (419) 994-3562 or email [lopr\\_beddow@tccsa.net](mailto:lopr_beddow@tccsa.net) if you have questions or comments about this report.

Respectfully submitted,



Marie Beddow  
Treasurer

## MISSION STATEMENT

The L-P Schools, in partnership with students, families and the community, will provide a safe and challenging educational environment where all students have the opportunity to reach their highest potential and become well-rounded citizens in a global society.

*Providing Quality  
Education to Mohican  
Country's Children*

## BOARD OF EDUCATION MEMBERS

Mr. David Hunter  
*President*

Mr. Roy Templeman  
*Vice President*

Mr. John Carroll  
*Board Member*

Dr. Nathan Stinemetz  
*Board Member*

Mrs. Kathleen Adams  
*Board Member*

## APPOINTED OFFICIALS

Ms. Catherine Puster  
*Superintendent*

Ms. Marie Beddow  
*Treasurer*



## REVENUES AND RESOURCES OVER EXPENDITURES AND SERVICES

The Financial Activity Statement below is shown on a cash-basis for the District's General Fund. This type of schedule, known in accounting terms as the income statement, provides a summary of the receipts and resources received by the District compared to the disbursements and services provided by the District.

### RECEIPTS & RESOURCES

*(shown in thousands)*

	FY17	FY16	FY15
Property Taxes	\$5,074	\$5,007	\$4,932
Income Taxes	1,777	1,774	1,713
Tuition	558	456	694
Transportation Fees	2	3	2
Earnings on Investments	42	23	11
Classroom Materials and Fees	24	22	21
Other Local Revenues	48	48	33
Intergovernmental - State **	6,136	6,024	5,819
Intergovernmental - Federal	65	98	73
Other Financing Sources	13	25	57
Advances and Transfers	53	75	-
<b>Total Receipts and Resources</b>	<b>\$13,792</b>	<b>\$13,555</b>	<b>\$13,355</b>

### DISBURSEMENTS & SERVICES PROVIDED

*(shown in thousands)*

	FY17	FY16	FY15
Instruction	\$7,587	\$7,470	\$7,790
Pupil Support	527	517	506
Instructional Staff Support	760	680	553
Board/Administration/Fiscal/Central	1,675	1,570	1,579
Business Support	10	12	31
Operation and Maintenance	869	812	859
Public Transportation	628	753	668
Extracurricular	327	339	327
Operations of Non-instructional services	2	20	19
Facilities Acquisition and Construction	161	145	74
Debt Service	111	112	111
Advances and Transfers	184	53	75
<b>Total Disbursements and Services</b>	<b>\$12,841</b>	<b>\$12,483</b>	<b>\$12,592</b>
<b>Receipts and Resources Over Disbursements and Services</b>	<b>\$951</b>	<b>\$1,072</b>	<b>\$763</b>

\*\* Includes state foundation, property tax allocations, state tangible personal property tax reimbursement, and other unrestricted grants in aid.

# Our Disbursements and Services DEFINITIONS

**INSTRUCTION** is the activities directly dealing with the teaching of pupils or the interaction between teacher and pupil. Includes aides or classroom assistants of any type, who assist in the instructional process. Technology used by the students is also included here.

**PUPIL SUPPORT** is the activities which are designed to assess and improve the well-being of pupils and to supplement the teaching process. This includes guidance services, health services, psychological services and support services for students with disabilities.

**INSTRUCTIONAL STAFF SUPPORT** is the activities associated with assisting the instructional staff with the content and process of providing learning experiences for pupils.

**BOARD/ADMINISTRATION/FISCAL** are those activities concerned with establishing and administrating policy in connection with operating the school district. This function includes budgeting, receiving and disbursing, financial accounting, payroll, inventory control, auditing and fiscal services rendered by persons in the treasurer's office.

**PLANT OPERATION** are those activities concerned with keeping the physical plant open, comfortable and safe for use and keeping the grounds, buildings, and equipment in an effective working condition and state of repair. This includes activities of maintaining safety in buildings, on the grounds and in the vicinity of the schools.

**TRANSPORTATION** are those activities concerned with the conveyance of individuals to and from school, as provided by state law. It includes transportation to school activities and between home and school.

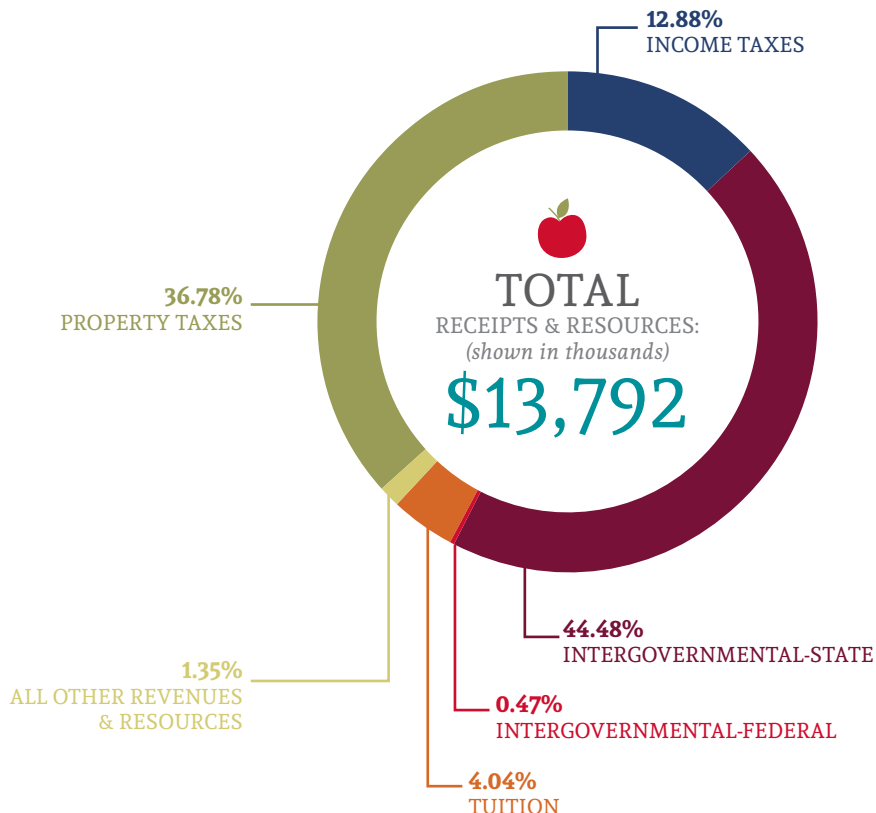
**CENTRAL SUPPORT** those activities, other than general administration, which support each of the other instructional and supporting services programs including planning, research, development, evaluation, information staff, statistical, and data processing services.

**EXTRACURRICULAR** are student activities under the guidance or supervision of qualified adults which are designed to provide opportunities for pupils to participate in such experiences on an individual basis at school events or public events.

**NON-INSTRUCTIONAL SERVICES** are those activities concerned with providing non-instructional services to students, staff or the community. Also includes providing certain services to other school districts.

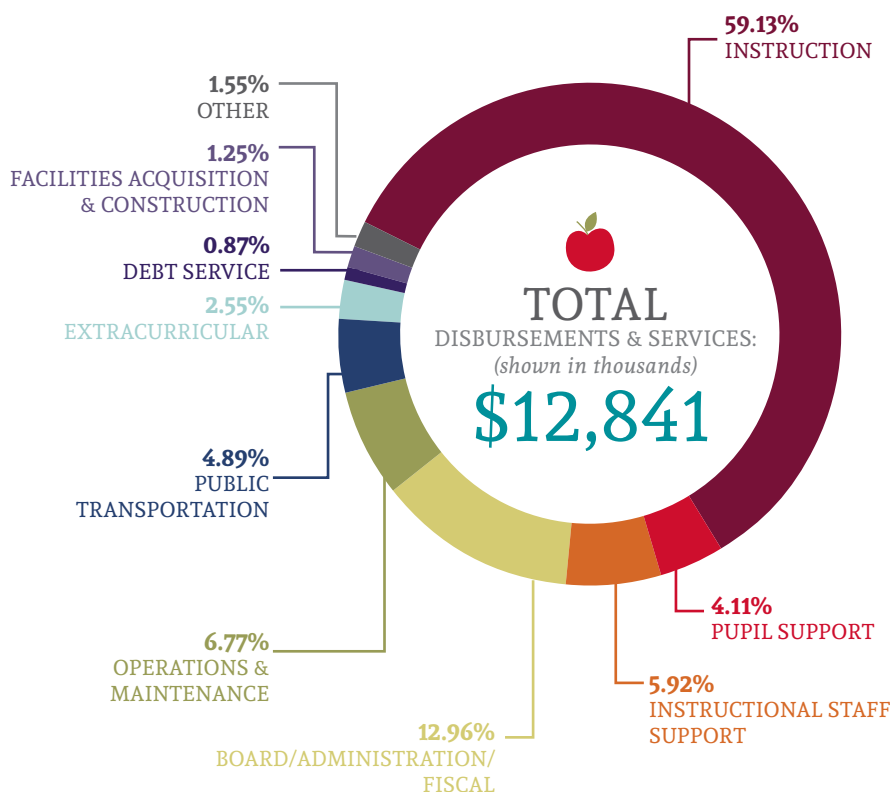
## GENERAL FUND RECEIPTS AND RESOURCES

The graph below displays the cash-basis receipts and resources for the General Fund for fiscal year 2017.



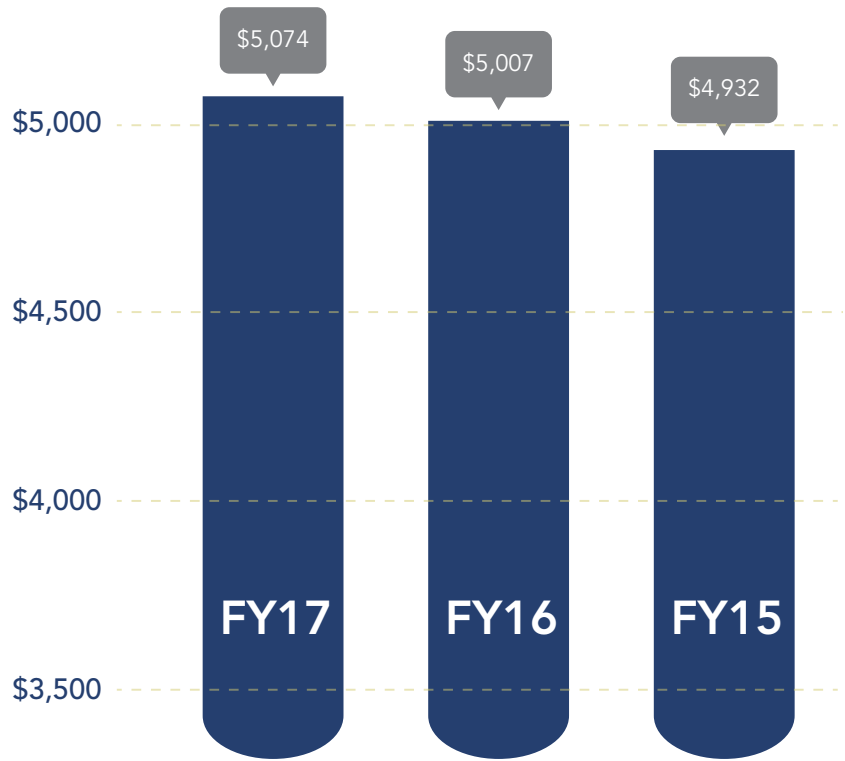
## GENERAL FUND DISBURSEMENTS AND SERVICES PROVIDED

The graph below displays the cash-basis disbursements and services provided for the General Fund for fiscal year 2017.



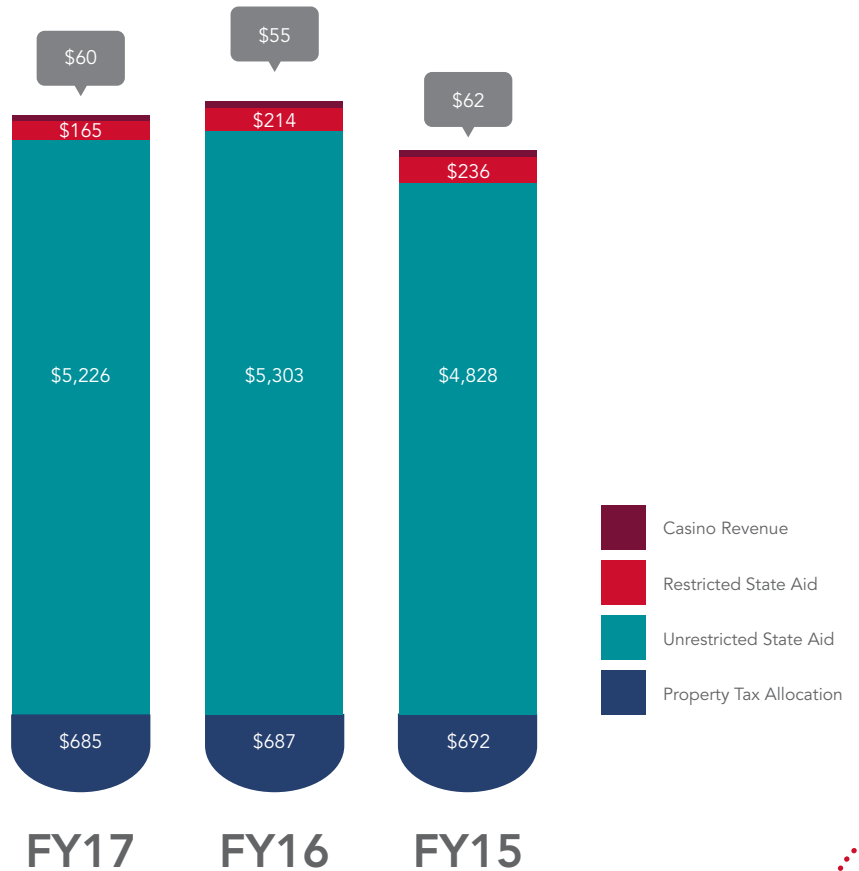
## PROPERTY TAXES

Below is a graph depicting the amount of cash collections received by the District from real and personal property taxes. Property taxes provide a majority of the local revenue to operate and maintain our schools. Amounts shown in thousands.



## STATE FUNDING

The chart below depicts the cash receipts for the District's General Fund from the State of Ohio. Monies received from the state are critical in running a fiscally solvent school district. The four primary components of State revenues are (1) unrestricted State Aid consisting of State Foundation which is a formula calculation based upon student enrollment, (2) property tax allocations which include Homestead and Rollback payments which represent the portion of the tax bill paid by the State instead of the taxpayer, (3) restricted State Aid consisting of economic disadvantaged and career tech funding, and (4) Casino tax revenue.



## UNBUNDLING THE TAX RATE

All tax rates for the District except inside millage are reduced as valuations increase. In accordance with House Bill 920, as property valuations increase during the triennial update and reappraisal periods, the voted millage is reduced in order to generate the same amount of tax revenue for the District as was received when each levy was initially approved by the voters. The chart below shows the difference in the District's "Gross" or voted tax rates, as compared to the "Effective" rates, which are what is being collected. The rates below are for the 2016 tax year collected in 2017.

### Tax Burden on Homeowners

Type	Gross Rate	Effective Rate	Tax Year Expiration
Inside-Operating	4.00	4.00	Permanent
Voted - Operating	25.20	18.32	Permanent
Permanent Improvement	1.50	1.50	December 2018
Emergency - Operating	2.13	2.13	December 2021
Emergency - Operating	6.86	6.86	December 2023
<b>Total Rates</b>	<b>39.69</b>	<b>32.81</b>	



## ASSESSED VALUES OF REAL PROPERTY

Collection Year	Agricultural/ Residential	Commercial/ Industrial	Other Real Estate	Public Utility Personal	Total
2017	\$135,871,200	\$24,199,990	\$171,990	\$23,538,670	\$183,781,850
2016	\$134,773,530	\$24,035,440	\$267,260	\$22,721,090	\$181,797,320
2015	\$135,332,380	\$24,076,420	\$285,740	\$21,679,570	\$181,374,110

## OPEN ENROLLMENT (OE)

Year	Open Enrollment In	Student FTE* OE In	Open Enrollment Out	Student FTE* OE Out	Net Open Enrollment Gain	Community School Loss	Total Annual Loss
2016-2017	\$512,767	88	\$445,278	76	\$67,489	\$(318,711)	\$(251,222)
2015-2016	\$428,552	73	\$377,416	71	\$51,136	\$(331,266)	\$(280,130)
2014-2015	\$405,412	70	\$354,632	64	\$50,780	\$(259,784)	\$(209,004)



# 2016-2017

## DISTRICT ACCOMPLISHMENTS



L-P Schools earned the Auditor of State Award for once again receiving a clean financial audit.



The Loudonville High School Class of 2017 earned a total of \$1,535,633 in college scholarships.



Loudonville High School offers 31 semester hours of college credit classes, five (5) nationally accredited STEM courses and a Financial Entrepreneurship class.



The Loudonville High School STEM Engineering program earned national accreditation from Project Lead the Way.



The Loudonville High School Robotics Team, in their first season of competition, qualified for the State Tournament and finished second, the U.S. Open, and the VEX World Championships where they finished in 18th place.



Three Loudonville High School choirs earned Superior ratings at state competition, the best results in school history.



C. E. Budd School, grades 4 – 6, was awarded with the Bronze Distinction honor for the implementation of Positive Behavior Intervention Supports during the 2016-2017 school year



LPEVSD was ranked in the top 20% of all school districts in Ohio, according to the Ohio Department of Education district report cards. Ohio has over 600 districts.



Loudonville High School and Junior High School are among the 2016 Top Performing Schools in the Northeast Region according to High Schools That Work (HSTW) and Making Middle Grades Work (MMGW) national survey results.



Completed third round of Permanent Improvement projects at R. F. McMullen Elementary School that included masonry repair, resurfaced playground and parking lot, upgraded security, restored gutters, and completed window and door replacement.



**LOUDONVILLE-  
PERRYSVILLE**  
EXEMPTED VILLAGE SCHOOL DISTRICT

210 E Main St, Loudonville, OH 44842 | 419.994.3912  
[www.lpschools.k12.oh.us](http://www.lpschools.k12.oh.us)